


	1	2	3	4	5	6	7	8	9	10	11	12	13	14	15	16	17
A	<h1 style="text-align: center;">iLuCharge Controller v2</h1> <h2 style="text-align: center;">Diagrams & connections</h2> 																
B																	
C																	
D																	
E																	
F																	
G																	
H																	

Author: iLumen

Titlepage

File:

Date: 7/06/2023

Folio: 1/8

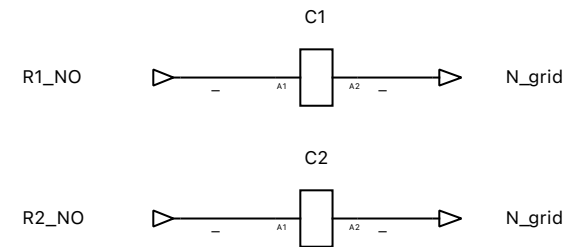
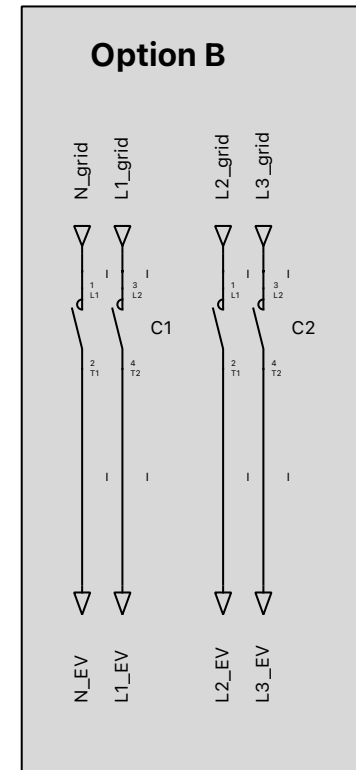
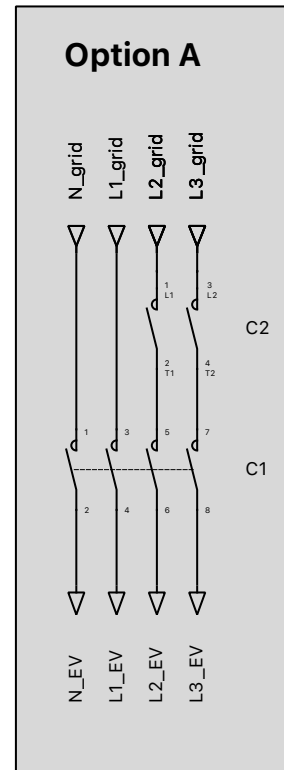
A
B
C
D
E
F
G
H

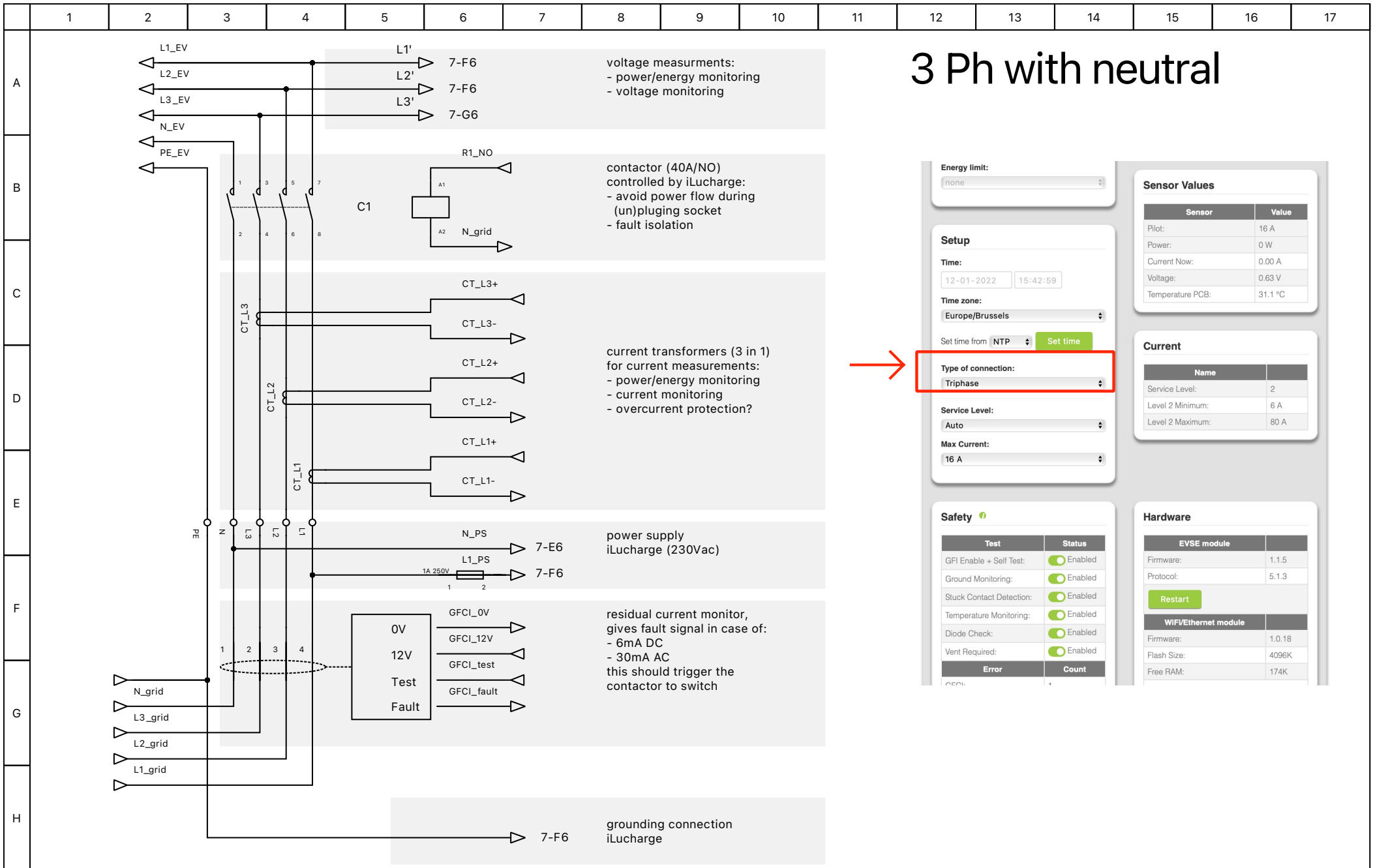
Information:

All wiring instructions in this document are made for option A. This to ensure the compliance with IEC 62955.

Option B is not recommended for safety reasons

The described wiring on this page are summarized. They do not contain al measurements and are only shown to show the main difference in the possible wiring options.





Energy limit:
none

Setup
Time: 12-01-2022 15:42:59
Time zone: Europe/Brussels
Set time from NTP Set time

Type of connection:
Triphase

Service Level:
Auto

Max Current:
16 A

Safety

Test	Status
GFI Enable + Self Test:	Enabled
Ground Monitoring:	Enabled
Stuck Contact Detection:	Enabled
Temperature Monitoring:	Enabled
Diode Check:	Enabled
Vent Required:	Enabled
Error	Count
GFCI	1

Sensor Values

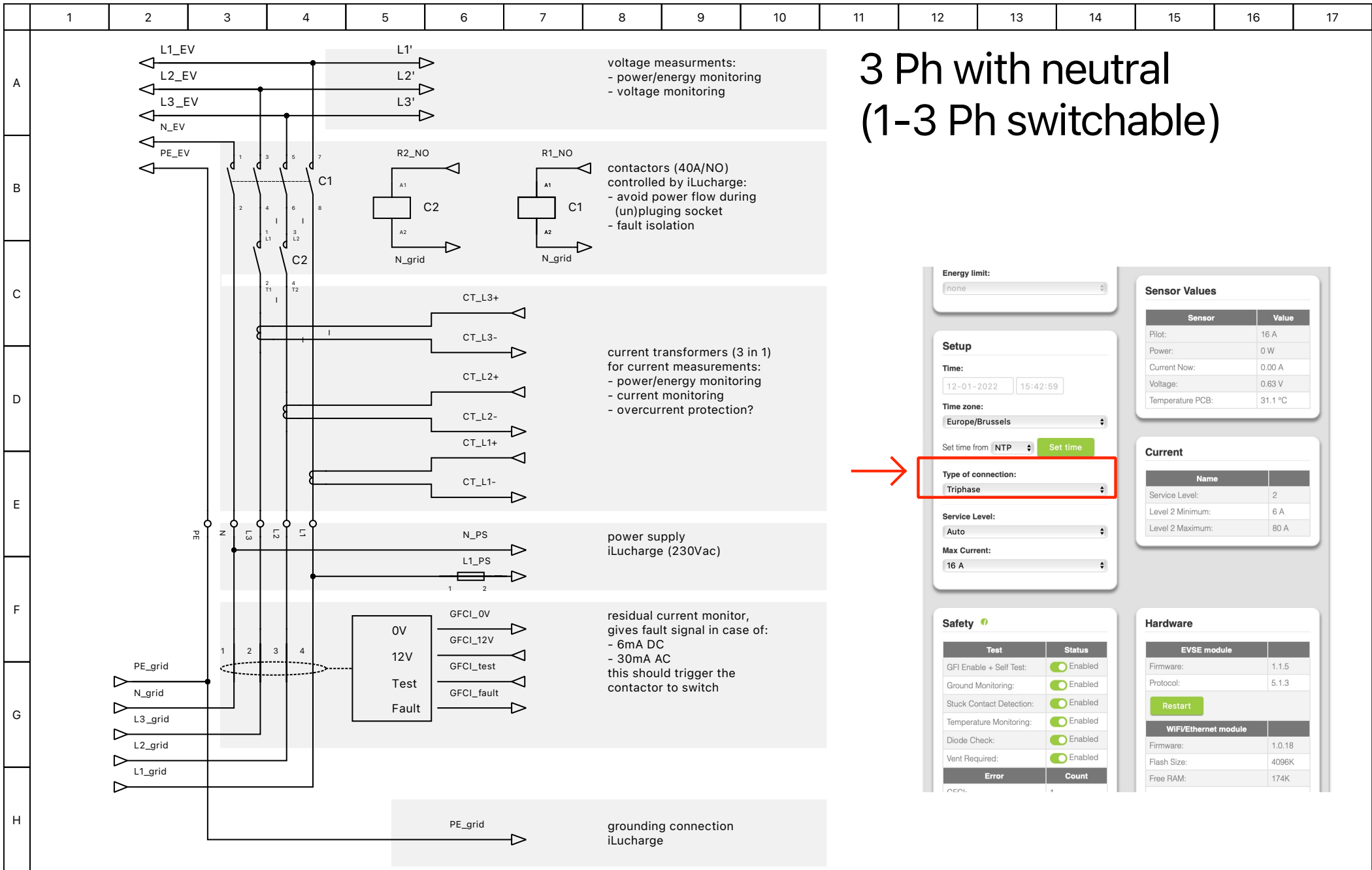
Sensor	Value
Pilot:	16 A
Power:	0 W
Current Now:	0.00 A
Voltage:	0.63 V
Temperature PCB:	31.1 °C

Current

Name	Value
Service Level:	2
Level 2 Minimum:	6 A
Level 2 Maximum:	80 A

Hardware

EVSE module	
Firmware:	1.1.5
Protocol:	5.1.3
Restart	
WiFi/Ethernet module	
Firmware:	1.0.18
Flash Size:	4096K
Free RAM:	174K



3 Ph with neutral (1-3 Ph switchable)

Energy limit:
none

Sensor Values

Sensor	Value
Pilot:	16 A
Power:	0 W
Current Now:	0.00 A
Voltage:	0.63 V
Temperature PCB:	31.1 °C

Setup

Time: 12-01-2022 15:42:59

Time zone: Europe/Brussels

Set time from NTP Set time

Type of connection: Triphase

Service Level: Auto

Max Current: 16 A

Current

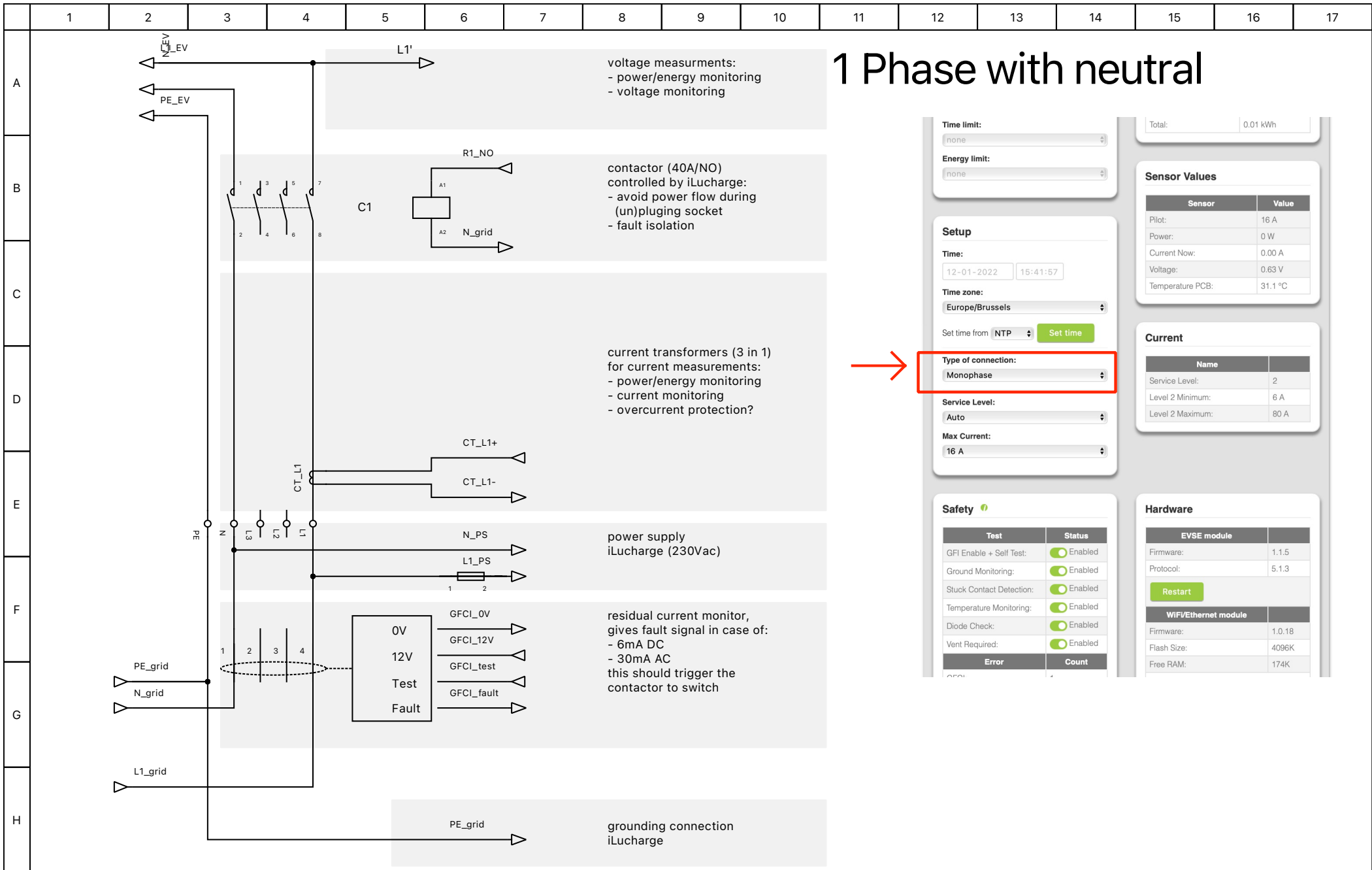
Name	Value
Service Level:	2
Level 2 Minimum:	6 A
Level 2 Maximum:	80 A

Safety

Test	Status
GFI Enable + Self Test:	Enabled
Ground Monitoring:	Enabled
Stuck Contact Detection:	Enabled
Temperature Monitoring:	Enabled
Diode Check:	Enabled
Vent Required:	Enabled

Hardware

EVSE module	
Firmware:	1.1.5
Protocol:	5.1.3
Restart	
WiFi/Ethernet module	
Firmware:	1.0.18
Flash Size:	4096K
Free RAM:	174K



Time limit: none

Energy limit: none

Total: 0.01 kWh

Sensor Values

Sensor	Value
Pilot:	16 A
Power:	0 W
Current Now:	0.00 A
Voltage:	0.63 V
Temperature PCB:	31.1 °C

Setup

Time: 12-01-2022 15:41:57

Time zone: Europe/Brussels

Set time from: NTP

Type of connection: Monophase

Service Level: Auto

Max Current: 16 A

Current

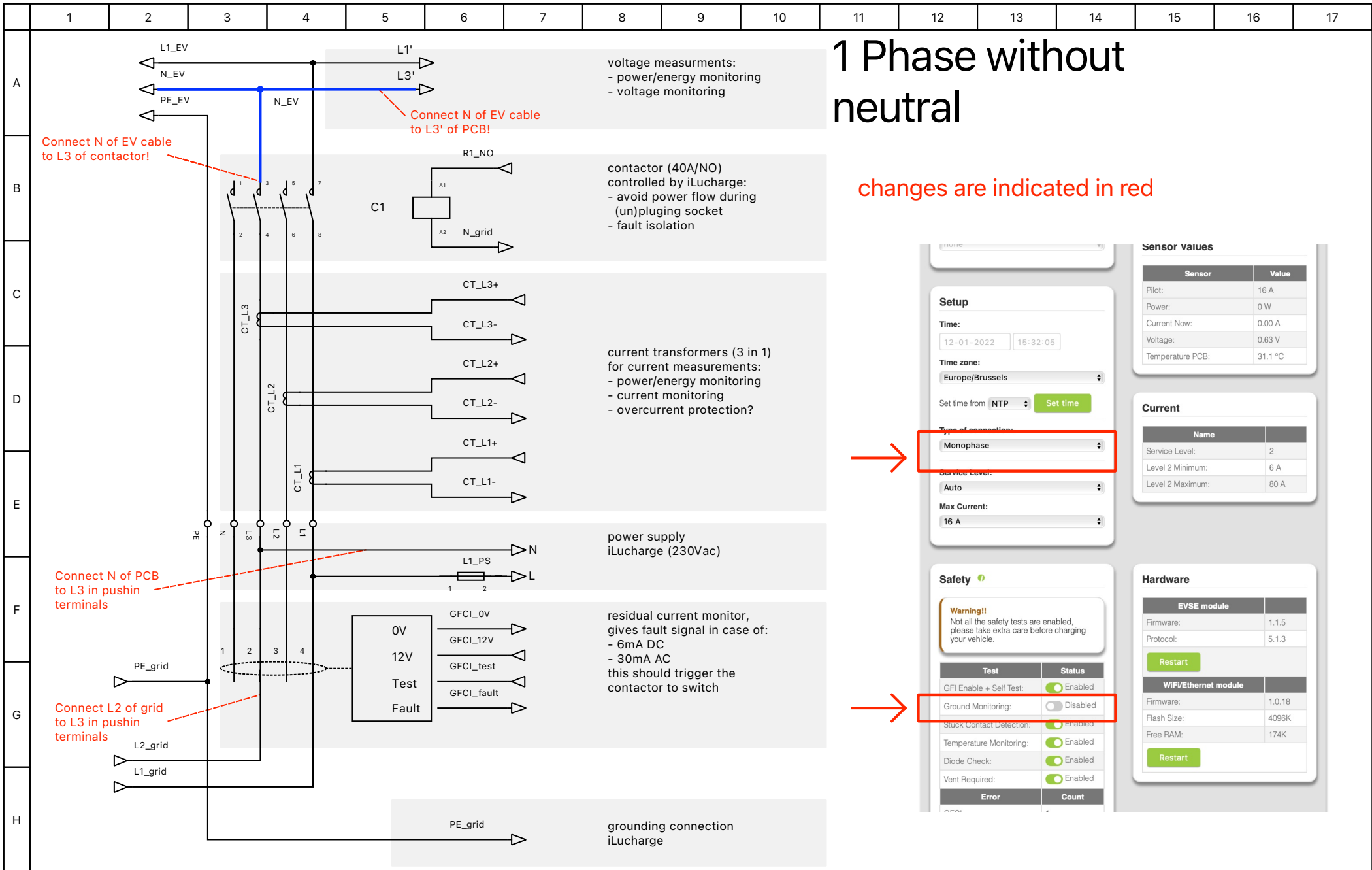
Name	Value
Service Level:	2
Level 2 Minimum:	6 A
Level 2 Maximum:	80 A

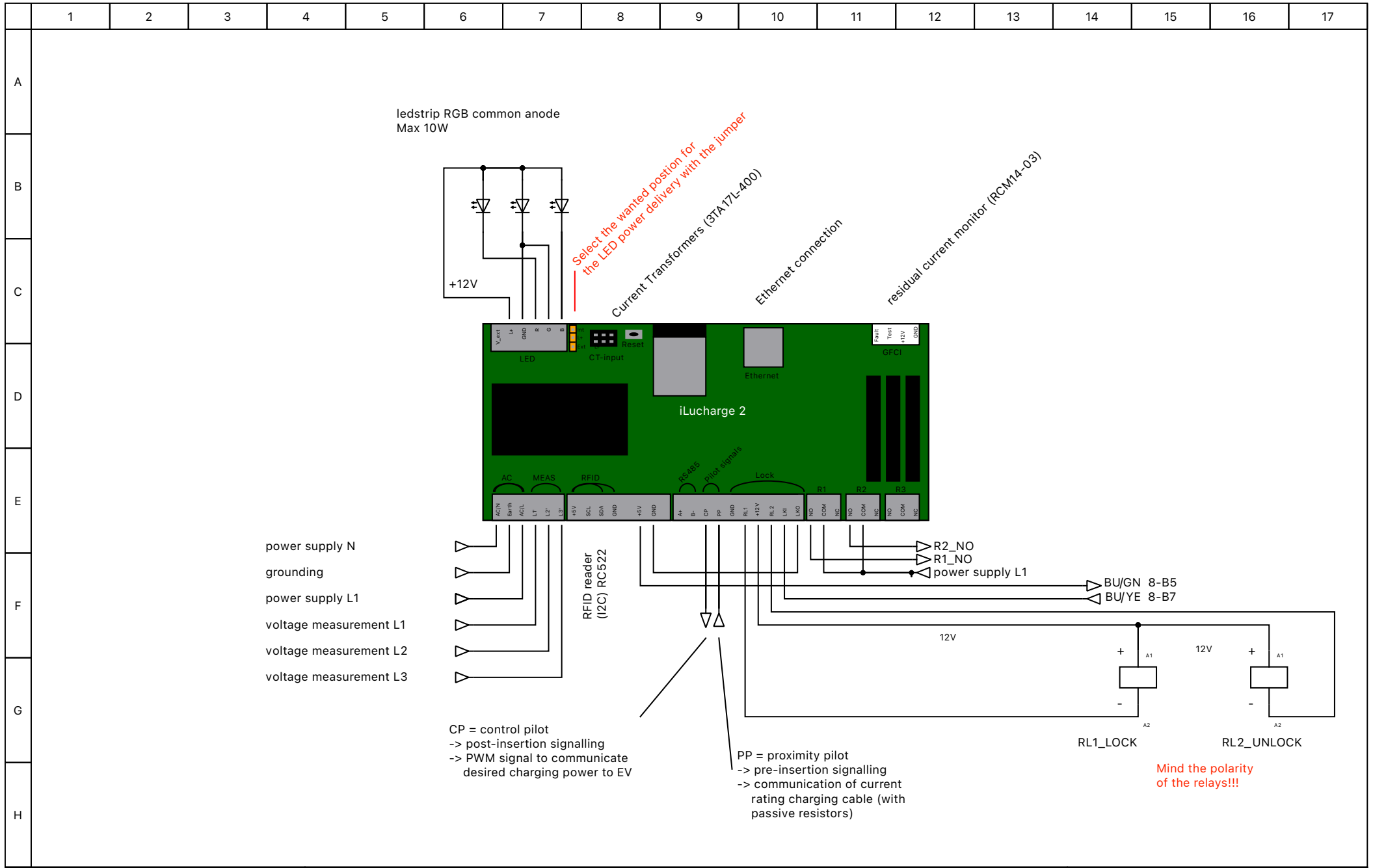
Safety

Test	Status
GFI Enable + Self Test:	Enabled
Ground Monitoring:	Enabled
Stuck Contact Detection:	Enabled
Temperature Monitoring:	Enabled
Diode Check:	Enabled
Vent Required:	Enabled

Hardware

EVSE module	
Firmware:	1.1.5
Protocol:	5.1.3
<input type="button" value="Restart"/>	
WiFi/Ethernet module	
Firmware:	1.0.18
Flash Size:	4096K
Free RAM:	174K





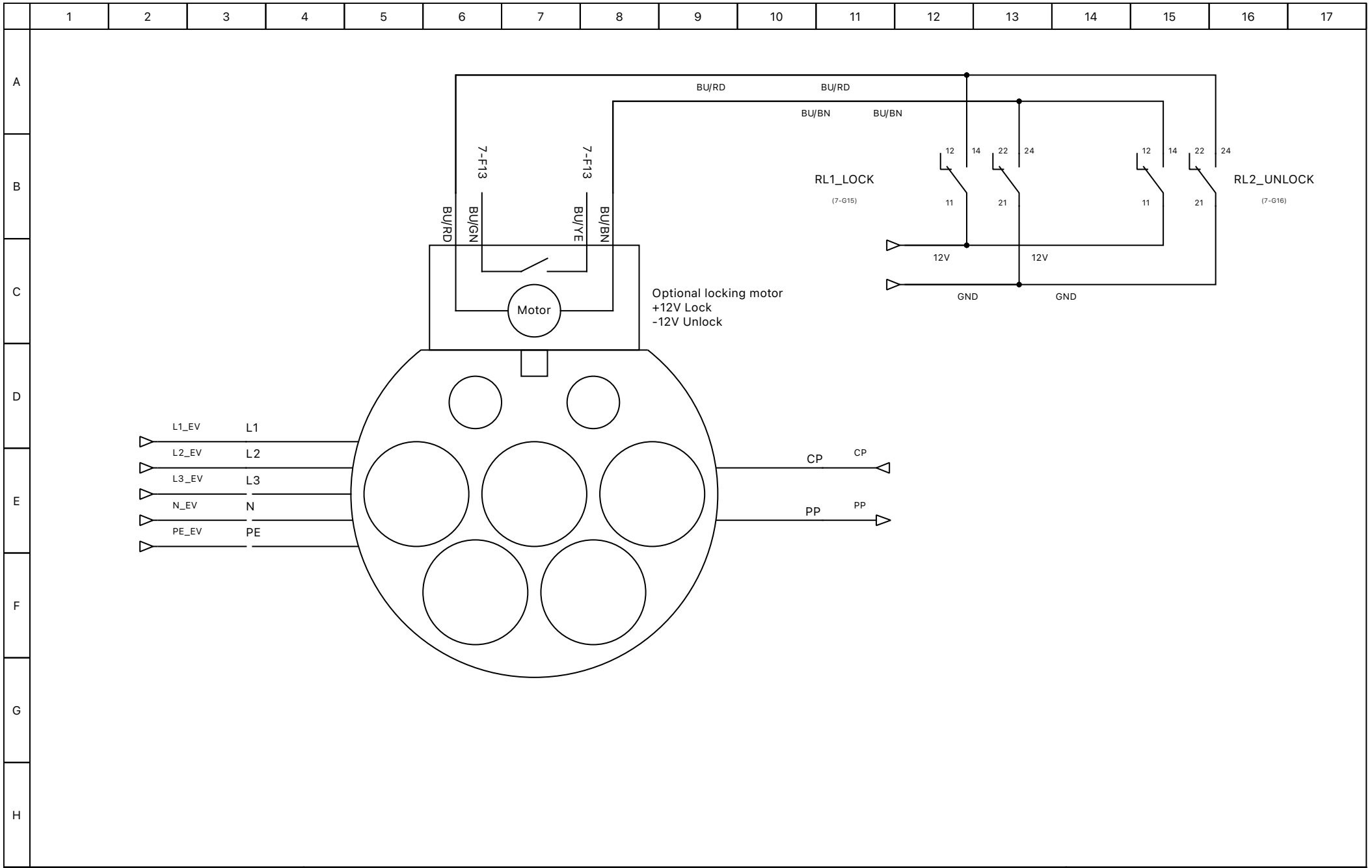
Author: iLumen

Date: 12/06/2023

EV Controller

File:

Folio: 7/8



Author: iLumen

Date: 12/06/2023

Type 2 Socket Connection

File:

Folio: 8/8