

iLucharge 2

Maak van uw wagen een batterij in een handomdraai om uw elektriciteit nog slimmer te gebruiken.



Laden en ontladen met 1 toestel.



Slechts 1 omvormer voor uw PV en (ont-)laden.



Hoogste rendement met het minst aantal omzettingen.

Technische gegevens Laadmodule

INPUT (AC) – From grid

Voltage	3 x 400V + N
Max. current	40A
Max. section	6mm ²

OUTPUT (AC) – To inverter

Voltage	3 x 400V + N
Max. current	40A
Max. section	6mm ²

Internal protection

AC circuit breaker	2P 6A
--------------------	-------

OUTPUT (DC) – To inverter

Voltage range	200 - 850Vdc
Max. current	40A _{dc}
Max. section	6mm ²

CCS2 charging cable

Max. length	7m
Max. current	40A _{dc}
Max. section	6mm ²

Internal protection

DC fuses	2 x 30A _{dc}
6mA DC detection	Fully compliant with IEC62752

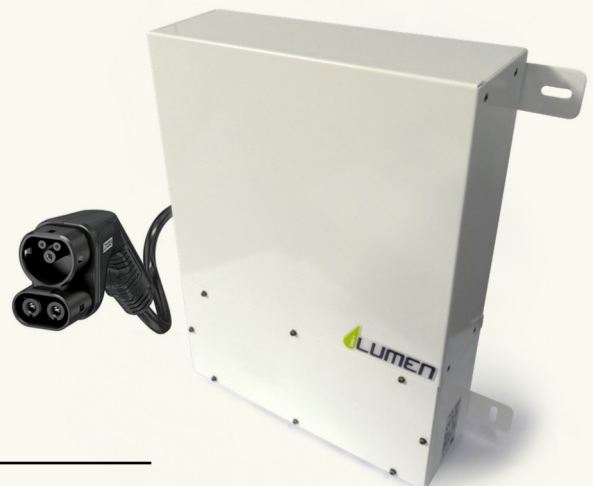
General data

Dimension (mm - w x h x d)	520 x 540 x 140
Weight (kg)	20
Cooling	Natural
Protection Degree	IP30

Operating temperature range	-30°C - 60°C
Relative humidity	0 - 85%

Communication

Wifi	Yes
Ethernet	Yes
Ocpp	1.6J
Mqtt	Programmable
RS485	For internal use only
CAN-bus	For internal use only



iLucharge 2

Maak van uw wagen een batterij in een handomdraai om uw elektriciteit nog slimmer te gebruiken.



Technische gegevens omvormer

HYD 10KTL-3PH-A

Battery Input Data

Battery type	Lithium-ion, Lead-acid
No. of battery input	2
Battery voltage range	180-800V
Rated voltage	600V
Battery voltage range for full load	200-800V
Rated charging discharging power	10000W (5000/5000)
Max. charging discharging current	50A (25/25)
Peak charging discharging current, duration	70A (35/35), 60s
BMS communication mode	CAN (RS485)

AC Output Data (On-grid)

Rated AC power	10000W
Max. AC power output to utility grid	10000VA
Max. AC power from utility grid	20000VA
Rated output current	14.5A
Max. AC current output to utility grid	16A
Max. AC current from utility grid	29A
Rated grid voltage	3 / N / PE, 230 / 400 Vac
Grid voltage range	184 Vac~276 Vac
Rated grid frequency	50 / 60 Hz
Grid frequency range	45 Hz~55 Hz / 55 Hz~65Hz
Output power factor	1 default (+/-0.8 adjustable)
Output THDi (@Nominal output)	< 3%

AC Output Data (EPS)

Rated output power	10000W
Max. output power	11000VA
Peak output power, duration	20000VA, 60s
Max. output current	16A
Peak output current, duration	30A, 60s
Rated output voltage	3 / N / PE, 230 / 400 Vac
Rated output frequency	50 / 60 Hz
THDv	< 3%
Switch time	< 10ms

Efficiency

Euro efficiency	97.7%
Max. efficiency	98.2%
Max. battery charge discharge efficiency	97.8%

Protection

DC switch	Yes
PV reverse polarity protection	Yes
Output overcurrent protection	Yes
Output overvoltage protection	Yes
Anti-islanding protection	Yes
Residual current detection	Yes
Insulation resistor detection	Yes
SPD	PV: Type II standard, AC: Type III standard
Battery reverse protection	Yes

Features

DC terminal	MC4
Grid AC terminal	5P Connector
Back-up AC terminal	5P Connector
Display	LCD & Bluetooth+APP
Communication	RSC485, CAN2.0, WiFi, Optional: ethernet, 4G
Parallel operation	Yes

General Data

Dimension (W x H x D)	571.4 x 515 x 264.1mm
Weight	37kg
Inverter topology	Transformerless
Standby self consumption	< 15W
Operating temperature range	-10°C ~ +50°C
Relative humidity	0~100%
Installation method	Wall
Maximum number of paralld units	10
Operating altitude	< 4000m
Cooling	Forced airflow
Protection degree	IP65

Standard

EMC	EN 61000-6-1, EN61000-6-3
Safety standards	IEC 62109-1, IEC 62109-2, IEC 62040-1
Grid standards	VDE V 0124-100, V0126-1-1, VDE-AR-N 4105, CEI 0-16 / CEI 0-21, EN 50549, G98 / G99, UTE C15-712-1